



# RL-E50

## PARTS LIST

Hoist Serial number 5105 to \_\_\_\_\_

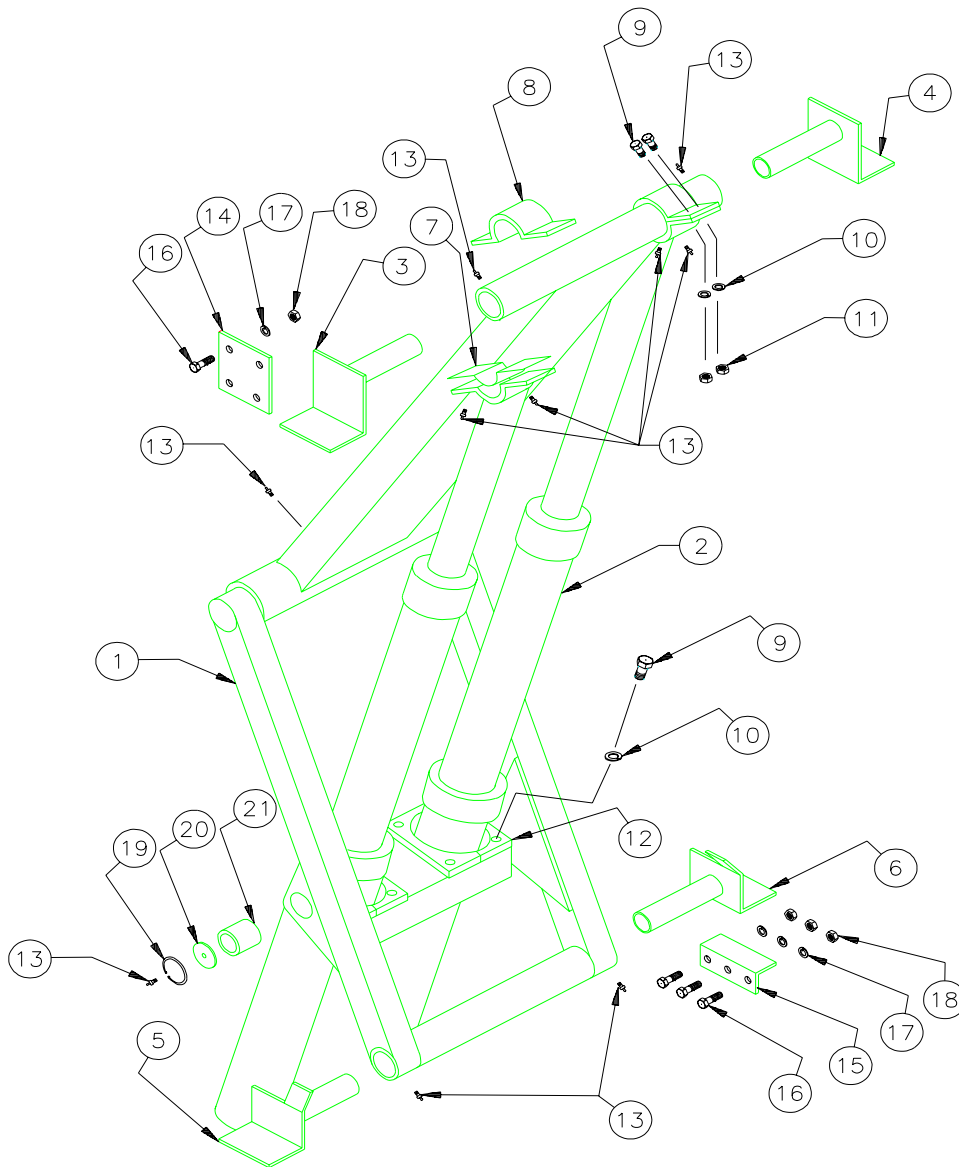
IF YOUR HOIST DOES NOT FALL WITHIN THE SERIAL NUMBER BREAKS,  
YOU WILL NEED TO CONTACT HARSH TO GET THE APPROPRIATE MANUAL

**FOR PUMP REPLACEMENT PARTS CONSULT PARTS LIST PROVIDED WITH THE PUMP**

Harsh International, Inc.  
600 Oak Avenue  
Eaton, CO 80615  
(970) 454-2291  
Fax: (970) 454-3491

Price: \$2.50

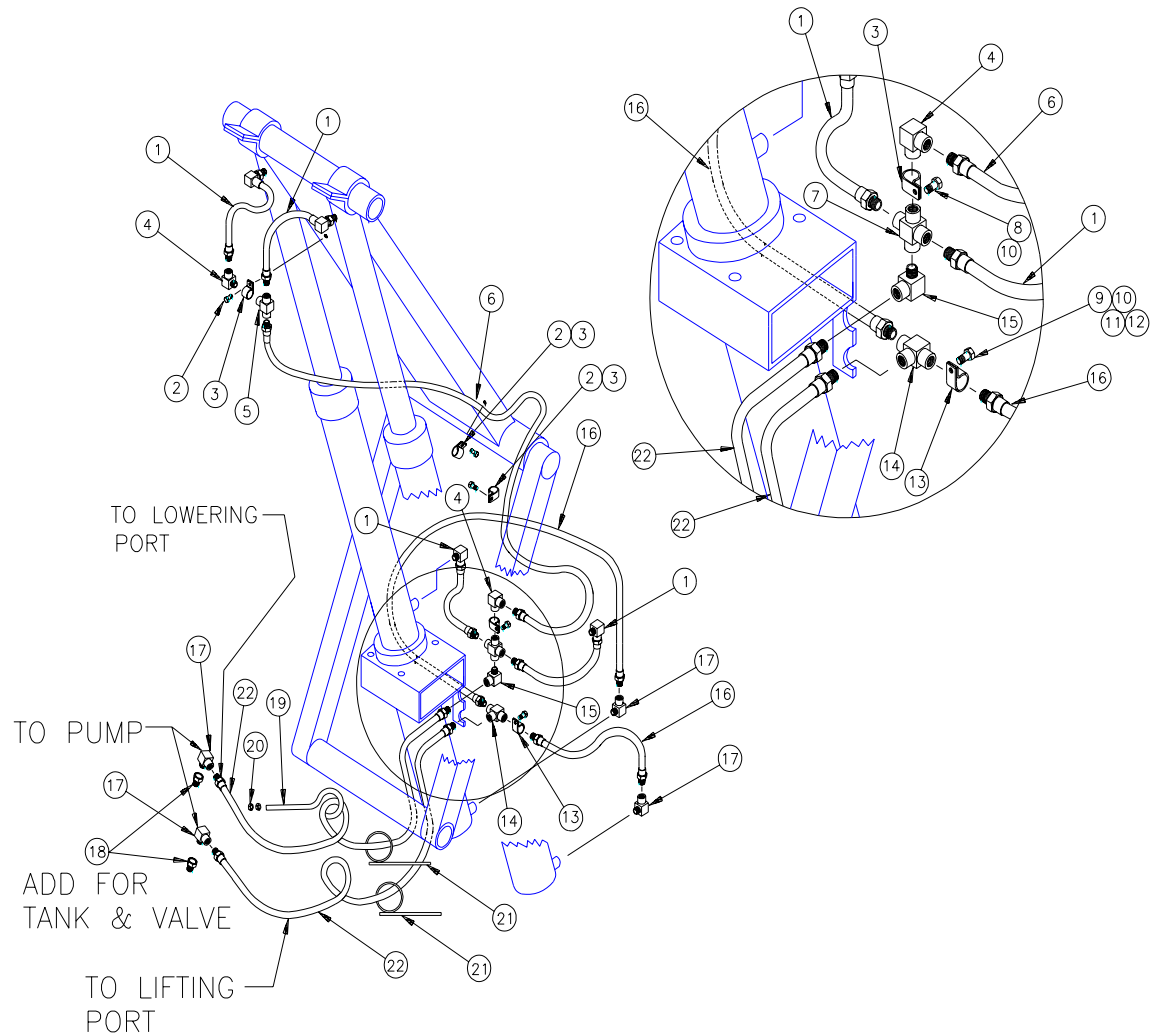
Parts book number: **102690F**



**E50 HOIST  
SCISSOR ASSEMBLY**

ITEM	PART #	QTY	DESCRIPTION	ITEM	PART #	QTY	DESCRIPTION
1	A12903	1	SCISSOR ASSEMBLY	12	16344	4	MOUNTING FLANGE HALF
*2	A1249	2	CYLINDER ASSEMBLY (COMPLETE)	13	100037	11	GREASE FITTING, DRIVE IN
3	A11610-2	1	UPPER MOUNT	14	11126	2	STRINGER ATTACHMENT PLATE
4	A11610-1	1	UPPER MOUNT	15	11127	2	ANGLE, FRAME ATTACHMENT
5	A11611-1	1	LOWER MOUNT	16	100230	14	SCREW, HEX HD CAP
6	A11611-2	1	LOWER MOUNT	17	100272	14	WASHER, LOCK
7	12907	2	BUSHING, BRASS	18	100250	14	NUT, HEX
8	18631	2	UPPER CYLINDER MOUNT	19	100147	2	SNAP RING
9	100240	16	SCREW, HEX HD CAP	20	12899	2	PLATE, GREASE RETAINING
10	100271	16	WASHER, LOCK	21	12900	2	BUSHING
11	100254	8	NUT, HEX	*22	A9777	1	DECAL KIT

**NOTE:** \*2 - A1249 INCLUDES CYLINDER ASSY, MOUNTING FLANGE HALVES, CYLINDER TOP MOUNT, BRASS BUSHING, SCREWS, LOCK WASHERS AND NUTS.  
 \*22 - A9777 INCLUDES ALL DECALS USED ON HOIST.  
 SOME HOISTS MAY HAVE SELF TAPPING ZERKS IN VARIOUS LOCATIONS.

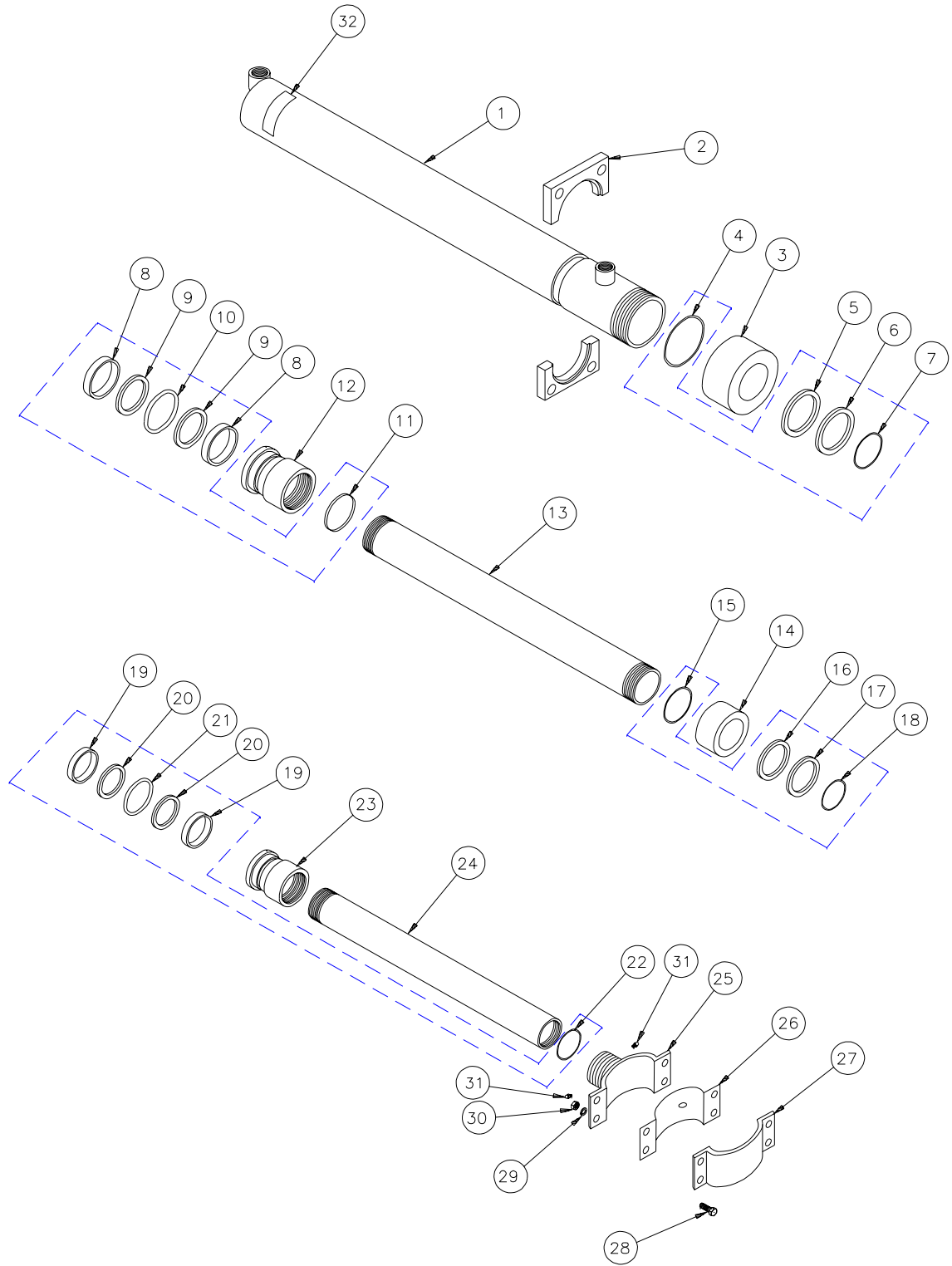


**E50 HOIST  
HOSE ASSEMBLY**

ITEM	PART #	QTY	DESCRIPTION	ITEM	PART #	QTY	DESCRIPTION
1	100937	4	HOSE ASSEMBLY	12	100221	1	NUT, HEX
2	100544	3	SCREW, HEX HD CAP	13	100935	1	HOSE CLAMP, 13/16 ID
3	100547	4	HOSE CLAMP, 11/16 ID	14	100010	1	TEE
4	100531	2	ELBOW	15	100527	1	ELBOW
5	100526	1	TEE	16	100939	2	HOSE ASSEMBLY
6	100938	1	HOSE ASSEMBLY	*17	100451	4	ELBOW
7	100936	1	CROSS	*18	100015	2	BUSHING
8	101819	1	SCREW, HEX HD	*19	100563	1	EYE BOLT
9	100109	1	SCREW, RND HD	*20	100254	2	NUT, HEX
10	100304	2	WASHER, LOCK	*21	A11166	2	HOSE SUPPORT
11	100443	1	WASHER, FLAT	22	100973	2	HOSE ASSEMBLY

**NOTE:** \*17 - FOR PUMP USE 100451 QTY. 4.  
 \*18 - FOR TANK & VALVE ADD BUSHINGS (100015) TO ELBOW (100451) BEFORE CONNECTING TO VALVE.  
 \*19,20,21 - USED TO SUPPORT ITEM #22 (100973) HOSE ASSEMBLY TO CHASSIS.

# E50 HOIST CYLINDER PARTS



**E50 HOIST  
CYLINDER PARTS LIST**

ITEM	PART #	QTY	DESCRIPTION	ITEM	PART #	QTY	DESCRIPTION
*	A1249	2	CYLINDER ASSEMBLY (COMPLETE)		A9170	1	SEAL KIT
1	A16345	1	CYLINDER BODY ASSEMBLY	*19	100575	2	WEAR RING
2	16344	2	MOUNTING FLANGE HALF	*20	100732	2	BACK-UP RING
3	11624	1	GLAND NUT	*21	100153	1	O-RING
	A9167	1	SEAL KIT	*22	100748	1	O-RING
*4	100192	1	O-RING	23	11621	1	PISTON
*5	100156	1	O-RING	24	11625	1	TUBE, CYLINDER (SECOND STAGE)
*6	100603	1	BACK-UP RING	25	A11616	1	CYLINDER MOUNT
*7	100383	1	WIPER RING	26	12907	1	BUSHING, BRASS
	A9168	1	SEAL KIT	27	18631	1	CYLINDER TOP MOUNT
*8	100576	2	WEAR RING	28	100240	4	SCREW, HEX HD CAP
*9	100731	2	BACK-UP RING	29	100271	4	WASHER, LOCK
*10	100157	1	O-RING	30	100254	4	NUT, HEX
*11	100749	1	O-RING	31	100037	2	GREASE FITTING, DRIVE IN
12	11622	1	PISTON	32	101045	1	DECAL, MAX CYL PRESS 3300PSI
13	11626	1	TUBE, CYLINDER (FIRST STAGE)				
14	11623	1	GLAND NUT				
	A9169	1	SEAL KIT				
*15	100190	1	O-RING				
*16	100747	1	O-RING				
*17	100864	1	BACK-UP RING				
*18	100135	1	WIPER RING				

**NOTE:** \* - A1249 INCLUDES CYLINDER ASSY, MOUNTING FLANGE HALVES, CYLINDER TOP MOUNT, BRASS BUSHING, SCREWS, LOCK WASHERS AND NUTS .

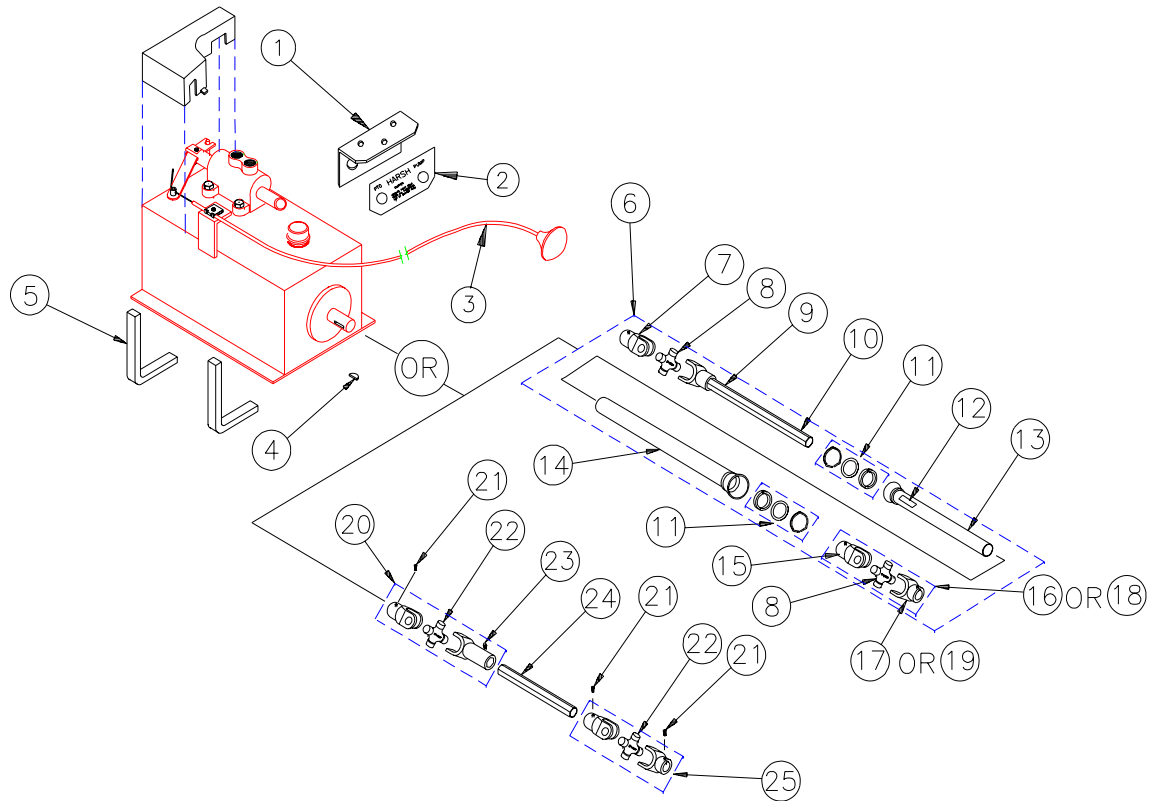
\*4-7 - NOT SOLD SEPARATELY, SOLD AS SEAL KIT #A9167 ONLY.

\*8-11 - NOT SOLD SEPARATELY, SOLD AS SEAL KIT #A9168 ONLY.

\*15-18 - NOT SOLD SEPARATELY, SOLD AS SEAL KIT #A9169 ONLY.

\*19-22 - NOT SOLD SEPARATELY, SOLD AS SEAL KIT #A9170 ONLY

## PTO SHAFT AND PUMP ACCESSORIES



ITEM	PART #	QTY	DESCRIPTION
*1			
*2			
*3			
4	4451	1	KEY, WOODRUFF
5	10062	2	PUMP BRACKET
*6	102942	1	DRIVE SHAFT, 7/8
7	9802	1	YOKE, PUMP 1 RND BORE
8	9788	2	CROSS & BEARING KIT
9	9801	1	DECAL, DANGER (SHAFT)
10	A9841	1	YOKE & SHAFT ASSY
11	9795	2	KIT, BEARING SHIELD
12	9800	1	DECAL, DANGER (OUTSIDE SHIELD)
13	9793	1	SHIELD, OUTER

ITEM	PART #	QTY	DESCRIPTION
14	9794	1	SHIELD, INNER
15	9796	1	YOKE, SLIP 7/8 HEX BORE
*16	102944	1	U-JOINT ASSY, 7/8 HEX-1 1/4 RND BORE
*17	9799	1	YOKE, PTO 1 1/4 RND BORE
*18	103000	1	U-JOINT ASSY, 7/8 HEX-7/8 RND BORE
*19	9798	1	YOKE, PTO 7/8 RND BORE
20	100477	1	U-JOINT ASSY, SLIP
21	100242	3	SET SCREW
22	4450	2	CROSS, U-JOINT
23	100218	1	ZERK
24	11239	1	DRIVE SHAFT, 7/8 HEX
25	100227	1	U-JOINT ASSY
*26	100896	1	DECAL, HOIST OPER-PTO PUMP

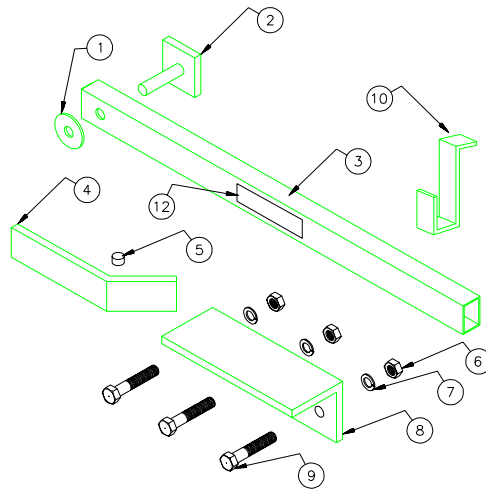
**NOTE:** \*1 \*2 \*3 SEVERAL STYLES USED CALL HARSH PARTS FOR PART NUMBERS

\*6 - INCLUDES ITEMS #7 THROUGH #19.

\*16 OR \*18 - USE EITHER #102944 (1 1/4 RND BORE) OR 103000 (7/8 RND BORE).

\*17 OR \*19 - USE EITHER #9798 OR #9799.

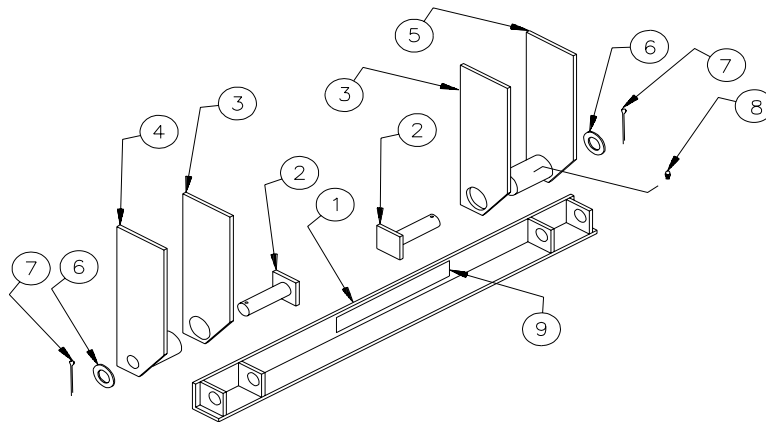
\*26 - APPLY DECAL #100896 ON DASHBOARD AS NEAR AS POSSIBLE TO HOIST CONTROLS.



**E50 HOIST  
SAFETY PROP PARTS LIST**

ITEM	PART #	QTY	DESCRIPTION	ITEM	PART #	QTY	DESCRIPTION
	A1387	1	SAFETY PROP ASSEMBLY	7	100272	3	WASHER, LOCK
1	101123	1	WASHER, FLAT	8	12251	1	BOTTOM ANGLE
2	A12245	1	PIN PLATE ASSEMBLY	9	100230	3	SCREW, HEX HD CAP
3	12243	1	SAFETY BOX PROP	10	12256	1	BRACKET, LATCHING
4	12249	1	SIDE PLATE	*11	101101	2	DECAL, BOX PROP (10 x 4 3/4)
5	12248	1	STOP PEG	12	101102	1	DECAL, BOX PROP (9 1/4 x 1 1/2)
6	100250	3	NUT				

NOTE: \*11 - APPLY ON OUTSIDE RUB RAIL IN AREA OF THE SERVICE SAFETY PROP. ONE DECAL ON EACH SIDE OF BOX.



**TAIL HINGE PARTS LIST**

ITEM	PART #	QTY	DESCRIPTION	ITEM	PART #	QTY	DESCRIPTION
	A1282	1	TAIL HINGE ASSY	5	A10167-2	1	VERTICAL PLATE ASSY
1	A10170	1	TAIL HINGE ANGLE ASSY	6	101123	2	WASHER, FLAT
2	A10164	2	PIN ASSY	7	101077	2	COTTER PIN, 2" LG.
3	10165	2	VERTICAL PLATE	8	100037	2	GREASE ZERK
4	A10167-1	1	VERTICAL PLATE ASSY	9	100974	1	DECAL, TAIL HINGE