



RL-A05

PARTS LIST

USE THIS PARTS LIST 102686D FOR:

Hoist Serial number to _____

For older hoists use the following:

Parts list no. 102686C for serial number 305 to _____.

Parts list no. 102686B for serial number 200 to 304.

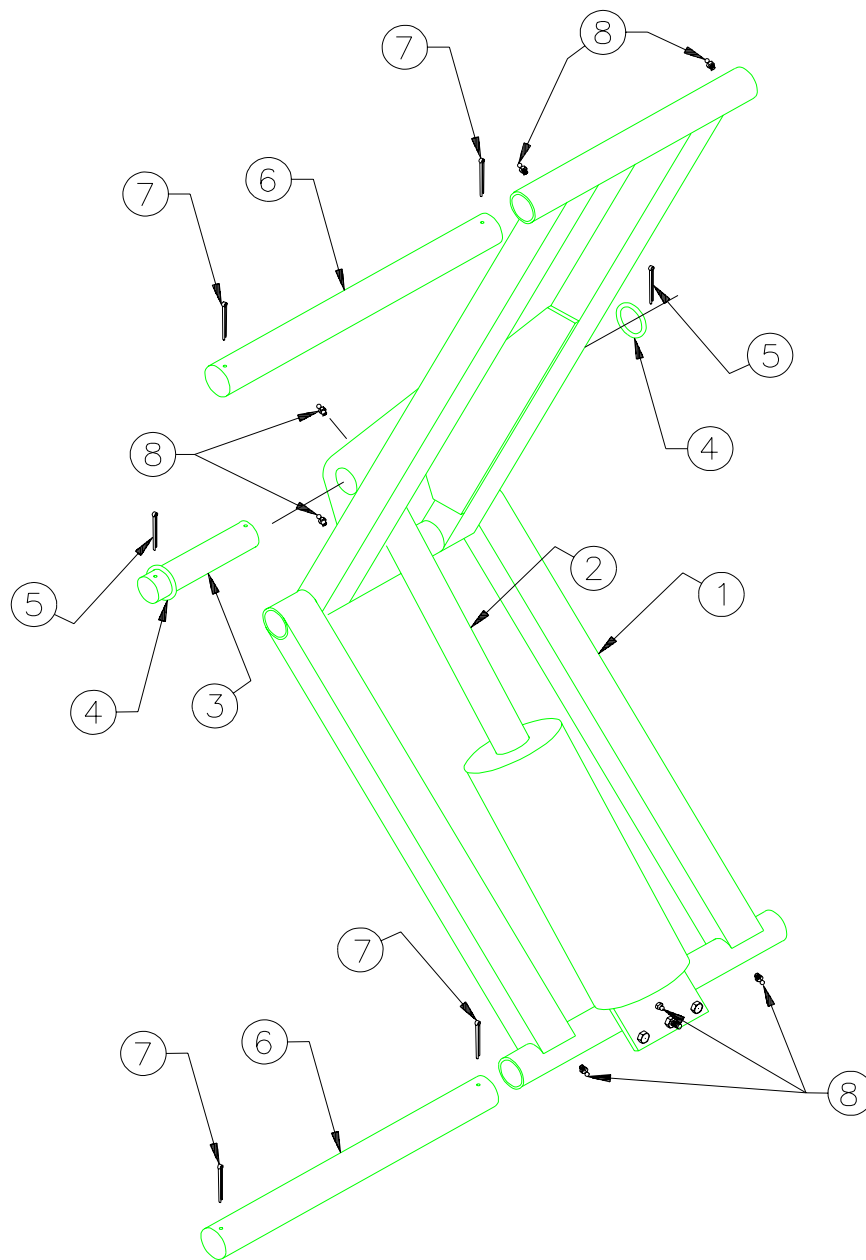
Parts list no. 102686A for serial number 001 to 199.

FOR PUMP PART NUMBERS CONSULT PARTS LIST SUPPLIED WITH THE PUMP

Harsh International, Inc.
600 Oak Avenue
Eaton, CO 80615
(970) 454-2291
Fax: (970) 454-3491

Price: \$2.50

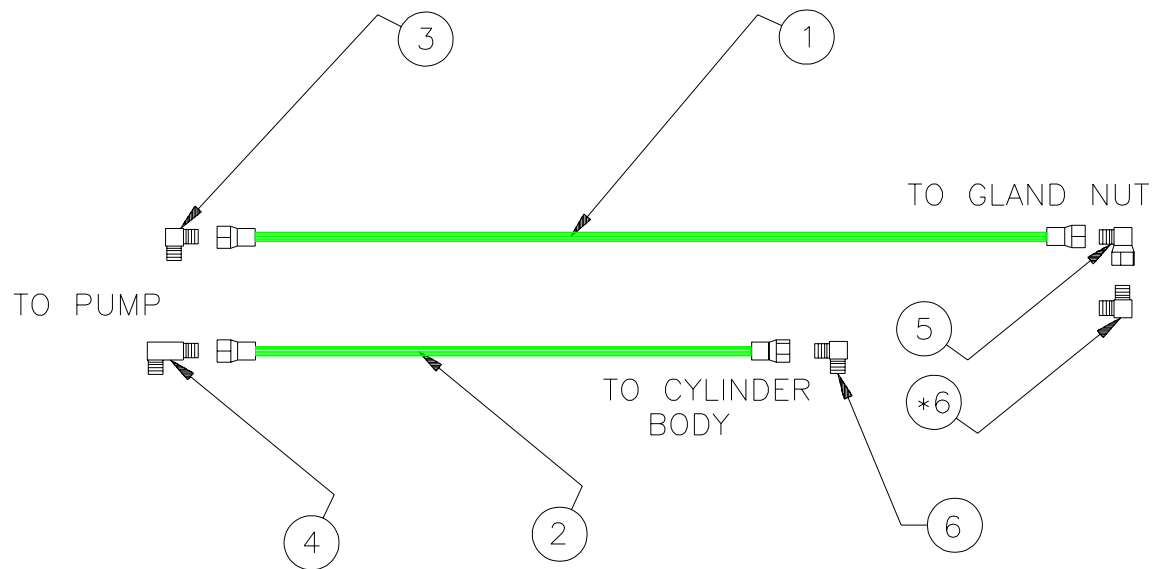
Parts book number: **102686D**



**A05 HOIST
SCISSOR ASSEMBLY**

ITEM	PART #	QTY	DESCRIPTION	ITEM	PART #	QTY	DESCRIPTION
1	A16125	1	SCISSOR ASSEMBLY	6	16284	2	PIN, HOIST MOUNT
*2	A1720	1	CYLINDER ASSEMBLY (COMPLETE)	7	101750	4	COTTER PIN
3	16147	1	CYLINDER MOUNT PIN	8	100037	7	GREASE FITTING, DRIVE IN
4	101123	2	WASHER, FLAT	*9	A9774	1	DECAL KIT
5	100282	2	COTTER PIN				

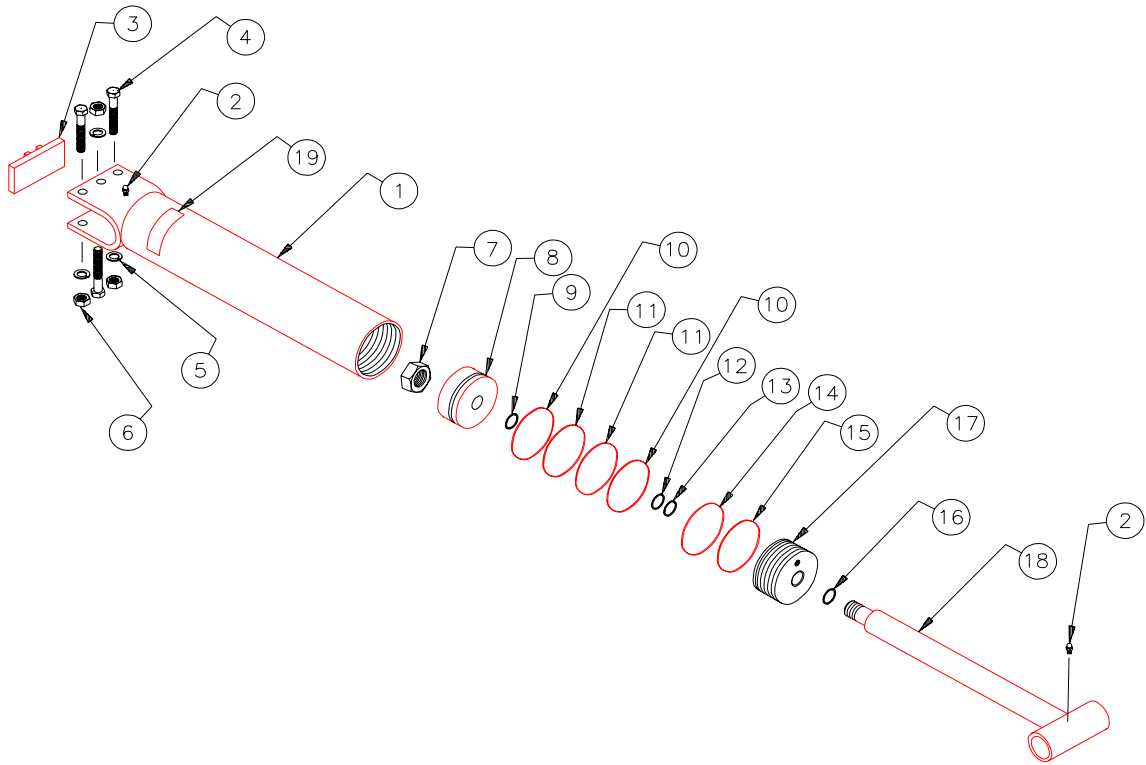
NOTE: *2 - A1720 INCLUDES CYLINDER ASSY, SCREWS, LOCK WASHERS, NUTS, ZERKS AND SPACER.



**A05 HOIST
HOSE ASSEMBLY**

ITEM	PART #	QTY	DESCRIPTION	ITEM	PART #	QTY	DESCRIPTION
1	102238	1	HOSE ASSEMBLY 95" LG	4	101966	1	ELBOW,90 DEG 1/4 NPT (LONG)
2	102239	1	HOSE ASSEMBLY 75" LG	5	101937	1	ELBOW,90 DEG #6 JIC-#6 JIC
3	101643	1	ELBOW,90 DEG 1/4 NPT- #6 JIC	*6	101642	2	ELBOW,90 DEG #6 JIC-#6 SAE

NOTE: *6 - IS INCLUDED WITH CYLINDER ASSY.



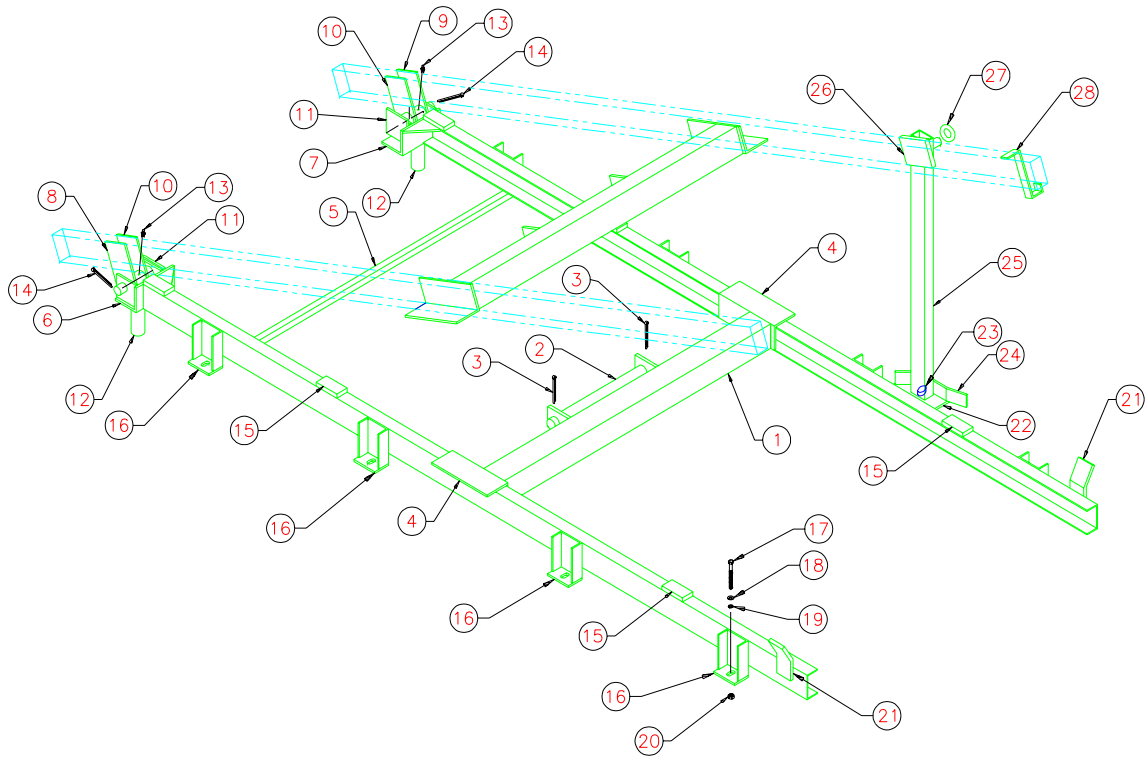
A05 HOIST CYLINDER PARTS LIST

ITEM	PART #	QTY	DESCRIPTION	ITEM	PART #	QTY	DESCRIPTION
*	A1720	1	CYLINDER ASSEMBLY (COMPLETE)	*10	100159	2	O-RING
1	A16136	1	CYLINDER BODY ASSEMBLY	*11	100621	2	BACK-UP RING
2	100037	2	GREASE FITTING (DRIVE IN)	*12	100747	1	O-RING
3	A16143	1	CYLINDER MNT SPACER ASSY	*13	100864	1	BACK-UP RING
4	102237	3	SCREW, HX HD CAP	*14	100192	1	O-RING
5	100271	3	WASHER, LOCK	*15	102222	1	BACK-UP RING
6	100254	3	NUT, HX	*16	100135	1	WIPER RING
7	100222	1	NUT, HX	17	16142	1	GLAND NUT
8	10095	1	PISTON	18	A16139	1	CYLINDER ROD ASSEMBLY
	A9415	1	SEAL KIT	19	101936	1	DECAL, MAX CYL PRESS 2500PSI
*9	100140	1	O-RING	*20	101106	1	DECAL, ELEC PUMP

NOTE: *A1720 - INCLUDES CYLINDER ASSY, SCREWS, LOCK WASHERS, NUTS, ZERKS AND SPACER.

*9-16 - NOT SOLD SEPARATELY, SOLD AS SEAL KIT #A9415 ONLY.

*20 - APPLY DECAL (101106) ON DASHBOARD AS NEAR AS POSSIBLE TO HOIST CONTROLS.



**A05 HOIST
SUB FRAME PARTS LIST**

ITEM	PART #	QTY	DESCRIPTION	ITEM	PART #	QTY	DESCRIPTION
1	A16280	2	TUBE ASSY, SUB FRAME MOUNT	15	16267	6	PLATE, SUB FRAME SPACER
2	16284	2	PIN, SUB FRAME MOUNT	16	16264	8	MOUNT ASSY, SUB FRAME PEDESTAL
3	101750	4	COTTER PIN	17	101817	8	SCREW, HX HD CAP
4	16283	4	ANGLE, UPPER MOUNT	18	100838	8	WASHER, FLAT
5	16279	1	ANGLE, SUPPORT	19	100272	8	WASHER, LOCK
6	A16272	1	TAIL HINGE ASSY, RIGHT	20	300826C	8	NUT, HEX
7	A16268	1	TAIL HINGE ASSY, LEFT	21	16311	2	BOX GUIDE, FRMD
8	A16278	1	VERTICAL PLATE ASSY, RIGHT	22	16302	1	ANGLE, SAFETY PROP
9	A16275	1	VERTICAL PLATE ASSY, LEFT	23	12248	1	STOP PEG
10	16276	2	PLATE, VERTICAL	24	16303	1	SIDE PLATE, FRMD
11	A16273	2	PIN ASSY, TAIL HINGE	25	16286	1	TUBE, SAFETY PROP
12	16321	2	TUBE, SPACER	26	A16287	1	TOP PIN PLATE ASSY
13	100037	2	GREASE FITTING, DRIVE IN	*27	100556	1	WASHER, FLAT
14	100369	2	COTTER PIN	28	16304	1	LATCHING BRACKET, SMALL

NOTE: *27 - WELD WASHER TO PIN AFTER INSTALLING SAFETY PROP.
INSTALLER WILL SUPPLY TWO 3 INCH CHANNELS FOR SIDE RAILS.